

# Plug-In Frequency Mixer

## SRA-2400+

Level 7 (LO Power +7 dBm) 750 to 2400 MHz

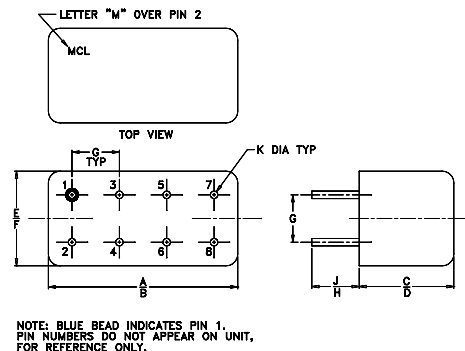
### Maximum Ratings

|                       |                |
|-----------------------|----------------|
| Operating Temperature | -55°C to 100°C |
| Storage Temperature   | -55°C to 100°C |
| RF Power              | 50mW           |
| IF Current            | 40mA           |

### Pin Connections

|             |         |
|-------------|---------|
| LO          | 1       |
| RF          | 8       |
| IF          | 3       |
| GROUND      | 2,5,6,7 |
| CASE GROUND | 2,5,6,7 |
| NOT USED    | 4       |

### Outline Drawing



### Outline Dimensions (inch)

| A     | B     | C    | D    | E    | F     |
|-------|-------|------|------|------|-------|
| .770  | .800  | .285 | .310 | .370 | .400  |
| 19.56 | 20.32 | 7.24 | 7.87 | 9.40 | 10.16 |

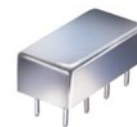
| G    | H    | J    | K    | wt    |
|------|------|------|------|-------|
| .200 | .20  | .14  | .031 | grams |
| 5.08 | 5.08 | 3.56 | 0.79 | 5.2   |

### Features

- low conversion loss, 5.95 dB typ.
- good L-R isolation, 30 dB typ. L-I isolation, 30 dB typ.
- rugged welded construction
- hermetic

### Applications

- ISM/GPS
- defense systems & aeronautical
- terrestrial radio



CASE STYLE: A06  
PRICE: \$27.20 ea. QTY (1-9)

**+ RoHS compliant in accordance with EU Directive (2002/95/EC)**

The +Suffix has been added in order to identify RoHS Compliance. See our web site for RoHS Compliance methodologies and qualifications.

### Electrical Specifications

| FREQUENCY (MHz) |        | CONVERSION LOSS (dB) |          |             |      | LO-RF ISOLATION (dB) |      | LO-IF ISOLATION (dB) |      |
|-----------------|--------|----------------------|----------|-------------|------|----------------------|------|----------------------|------|
| LO/RF           | IF     | Mid-Band             |          | Total Range |      |                      |      | M                    |      |
| $f_L - f_U$     |        | $\bar{X}$            | $\sigma$ | Max.        | Max. | Typ.                 | Min. | Typ.                 | Min. |
| 750-2400        | DC-400 | 5.95                 | .26      | 9.0         | 9.0  | 30                   | 20   | 30                   | 8    |

1 dB COMP.: +1 dBm typ.

### Typical Performance Data

| Frequency (MHz) |         | Conversion Loss (dB) | Isolation L-R (dB) | Isolation L-I (dB) | VSWR RF Port (:1) | VSWR LO Port (:1) |
|-----------------|---------|----------------------|--------------------|--------------------|-------------------|-------------------|
| RF              | LO      | LO +7dBm             | LO +7dBm           | LO +7dBm           | LO +7dBm          | LO +7dBm          |
| 500.00          | 530.00  | 5.45                 | 54.10              | 25.42              | 1.90              | 2.44              |
| 650.00          | 680.00  | 5.24                 | 46.72              | 24.17              | 1.19              | 2.42              |
| 800.00          | 830.00  | 5.18                 | 50.53              | 24.04              | 1.21              | 2.60              |
| 950.00          | 980.00  | 5.34                 | 39.92              | 22.92              | 1.56              | 2.84              |
| 1000.00         | 1030.00 | 5.61                 | 38.68              | 21.93              | 1.74              | 2.92              |
| 1100.00         | 1070.00 | 6.52                 | 35.67              | 19.02              | 1.90              | 2.94              |
| 1150.00         | 1120.00 | 6.54                 | 35.25              | 17.69              | 2.78              | 2.95              |
| 1250.00         | 1220.00 | 6.21                 | 35.47              | 16.09              | 3.17              | 2.82              |
| 1350.00         | 1320.00 | 6.10                 | 38.09              | 15.24              | 3.20              | 2.88              |
| 1500.00         | 1470.00 | 6.10                 | 40.51              | 17.24              | 3.59              | 3.05              |
| 1650.00         | 1620.00 | 6.97                 | 39.61              | 20.00              | 3.82              | 3.00              |
| 1750.00         | 1720.00 | 7.73                 | 40.56              | 21.79              | 4.92              | 2.60              |
| 1800.00         | 1770.00 | 7.87                 | 41.20              | 23.27              | 5.75              | 2.00              |
| 1950.00         | 1920.00 | 7.91                 | 37.08              | 25.03              | 6.73              | 1.71              |
| 2000.00         | 1970.00 | 7.83                 | 36.28              | 24.82              | 6.63              | 1.59              |
| 2150.00         | 2120.00 | 7.95                 | 34.61              | 21.63              | 7.22              | 1.54              |
| 2300.00         | 2270.00 | 8.12                 | 34.07              | 19.31              | 7.66              | 1.68              |
| 2400.00         | 2370.00 | 8.32                 | 33.85              | 18.30              | 8.43              | 2.03              |

### Electrical Schematic

